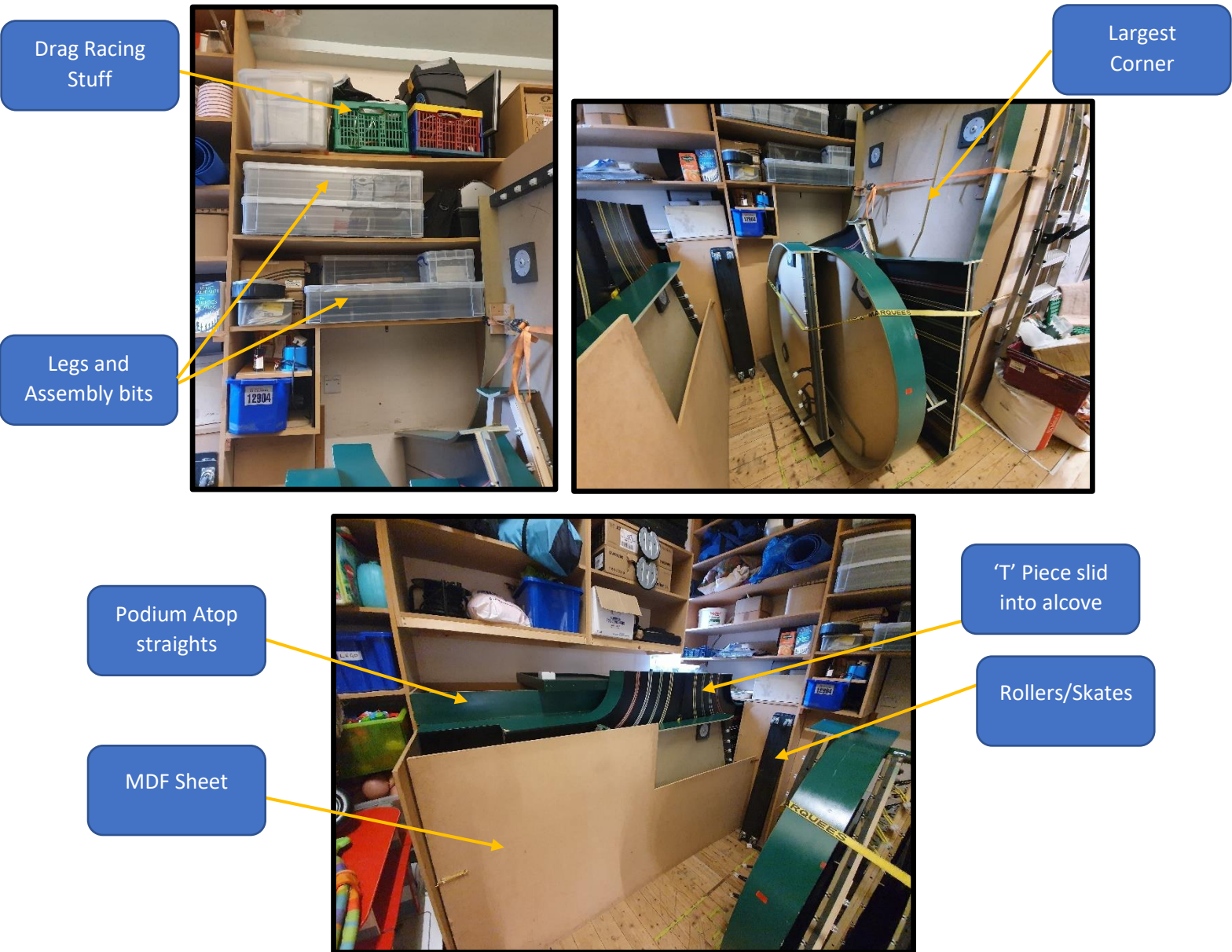


FLBT Track Build Guide (June 2021).

Assembly:

- Inspect the status of the store. If it has been left in an unacceptable condition by another hall user, take a picture and notify a committee member.

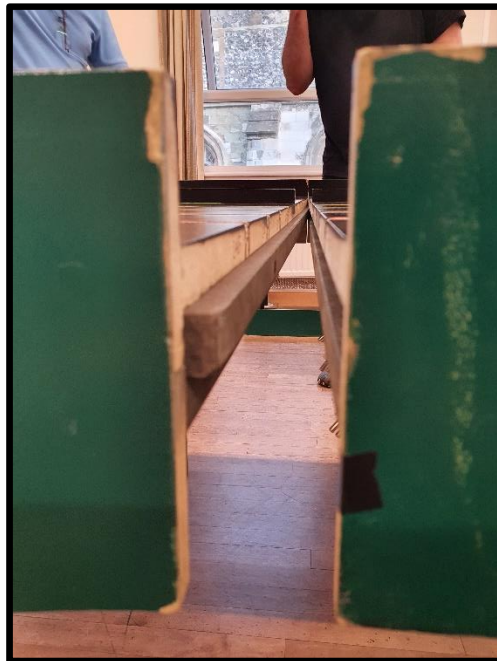


- Track plans are in a folder stored in the store.
- All Track sections are 2 person lifts.
- Move large sections on Rollers.
- Track tongues are placed into track sections with the holes in their lowest position.

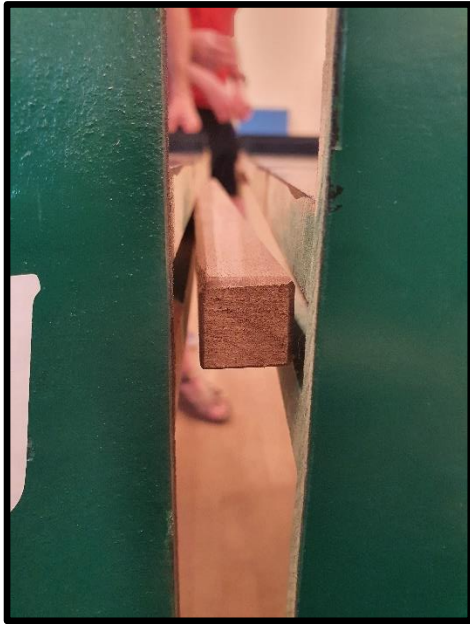


Hole in lowest position

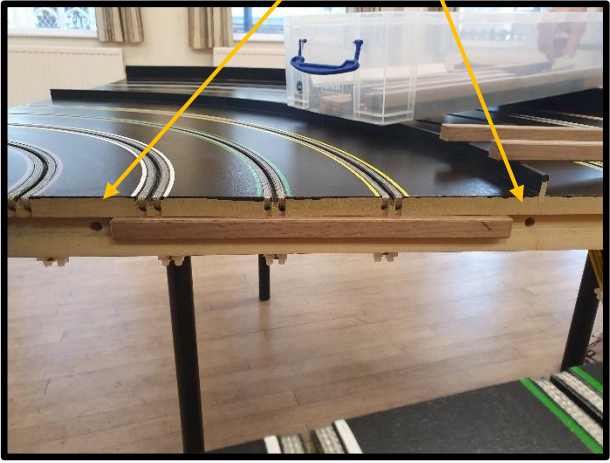
- Original track pieces use the long black tongues.



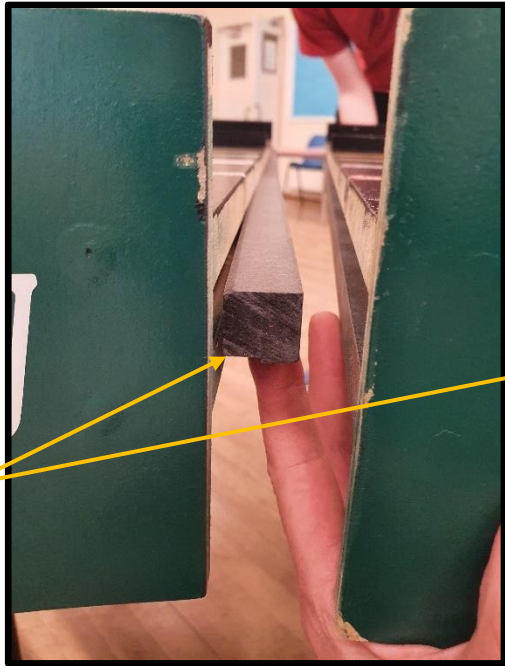
The newer track pieces Rocky, Hockey etc are joined together using the 'wooden' tongues stored in the box with the legs. Place the tongues without covering the bolt holes.



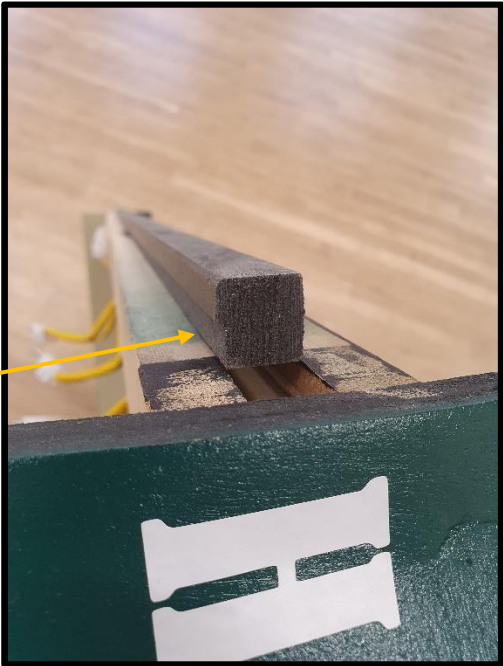
Holes



New to old sections are joined using stepped tongues (black).



Step in Tongue



- Track sections should not require force to assemble. If there is a step in the track surface, check the tongue being used, and try a looser fitting tongue.
- Track sections can be aligned using the piece of angled aluminium kept with the track nuts and spanners.





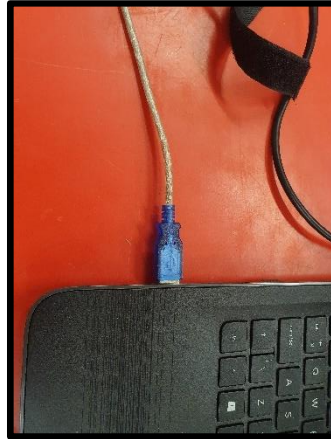
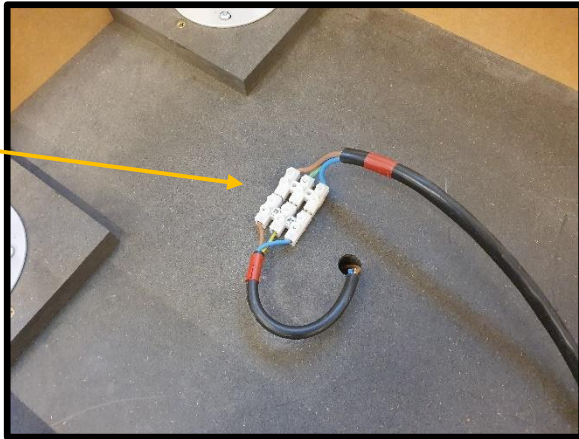
- Legs are screwed to the track section. The foot of the leg is adjustable. Set these at their screwed in position. When the track is assembled, wind out the leg foot to touch the floor.



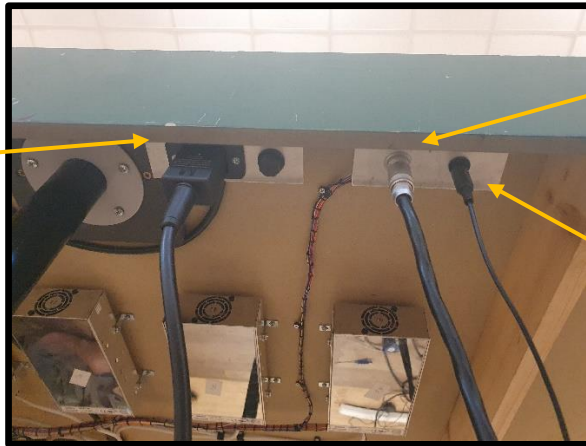
PC and electrical:

- All the cables are kept in one box.
- Most plugs are specific and are on the start straight. Plugs for the controller stations are colour coded.

Podium Connection



Mains Power

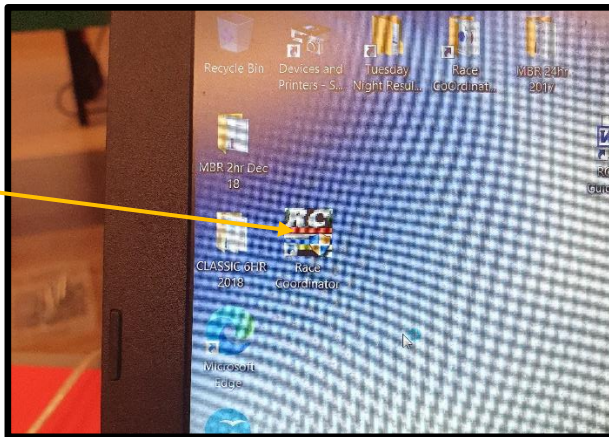


Lane control

Track Call

- Details on using the software (RC Race Co-Ordinator) are in a doc on the Desktop.

Race Control Software



FLBT Software guide & Troubleshooting

- Track Plugs are: Controller stations (x4). USB from start straight to Laptop. Track Call. Lane Power. Mains power.
- Monitors are available in the cupboard. If using 2 (or more), a HDMI adaptor (in the boxes) can be used for multiple monitors.

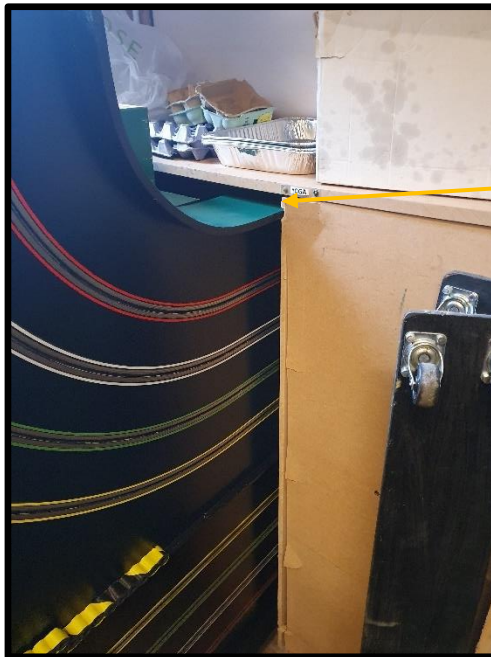
Dis-Assembly:

- Check all track sections are unplugged before moving.
- The large corner goes in the corner of the store, and is swivelled upright, and held with a ratchet strap.

- Place all straights in (x3). The PC is kept on the back of the start straight. The back of the start straight faces the back of the straight packed behind.



- Place the rostrum, on-top of the straights. The monitors also fit here.
- Place the T Piece in next, and slide into the alcove to hold the straights in.



T Piece slid into Alcove

- The longer corner goes against the T Piece, followed by the MDF sheet.
- All corners go in the store and are held in place with a ratchet strap. Small track sections can fit in-between some of the larger curves.

Put all tables, chairs etc away. Please leave the hall in a great condition.